



ANNIVERSARY 16763A



ANNIVERSARY 16763A Model number: 31ANN16763AH18

3 beds • 2 baths • 1216 sq.ft. • 16' width • 76' depth

Our home building facilities invest in continuous product and process improvements. Plans, dimensions, features, materials, specifications and availability are subject to change without notice or obligation. Renderings and floor plans are representative likenesses of our homes and may differ from the actual homes. We invite you to tour a Home Center near you and inspect the highest value in quality housing available or call (915) 778-6648 to speak with a Home Consultant. Copyright 2017, CMH. All rights reserved.

<https://www.claytonelpaso.com>

**CLAYTON HOMES-EL
PASO**

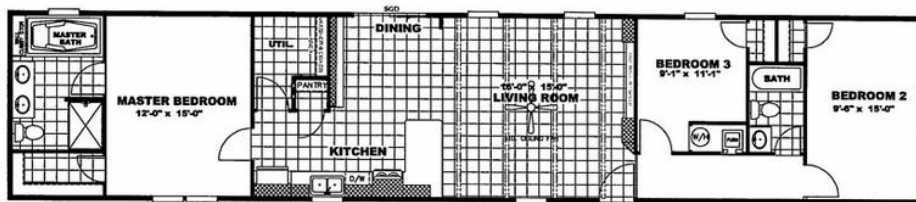
**6840 GATEWAY EAST
EL PASO, TX 79915**

Monday - Thursday: 9am to 6pm
Friday: 9am to 6pm
Saturday: 9am to 5pm
Sunday: Closed

(915) 778-6648



ANNIVERSARY 16763A



ANNIVERSARY 16763A Model number: 31ANN16763AH18

3 beds • 2 baths • 1216 sq.ft. • 16' width • 76' depth

Our home building facilities invest in continuous product and process improvements. Plans, dimensions, features, materials, specifications and availability are subject to change without notice or obligation. Renderings and floor plans are representative likenesses of our homes and may differ from the actual homes. We invite you to tour a Home Center near you and inspect the highest value in quality housing available or call (915) 778-6648 to speak with a Home Consultant. Copyright 2017, CMH. All rights reserved.

<https://www.claytonelpaso.com>

CLAYTON HOMES-EL PASO

6840 GATEWAY EAST
EL PASO, TX 79915

Monday - Thursday: 9am to 6pm
Friday: 9am to 6pm
Saturday: 9am to 5pm
Sunday: Closed

(915) 778-6648